

International Student Guide 2023



Contents

- 6 This is Sheffield
- 16 Your future starts here
- 38 Applying and courses
- 46 Here to help



The University of Sheffield is recognised globally for excellence in research and teaching. We welcome the best students from all over the world to join our vibrant, supportive community.

30,000

Over 30,000 students from 150 countries.

£7.6m

£7.6m million awarded through international scholarships in 2021.

92%

92% of our research is world-leading or internationally excellent (Research Excellence Framework 2021).

100

A world top 100 University (QS World University Rankings 2023).

50

Top 50 most international universities in the world (Times Higher Education World University Rankings 2022).

1

Number 1 Students' Union in the UK (Whatuni Student Choice Awards 2022).

**RUSSELL
GROUP**

A member of the UK's prestigious Russell Group.



Vibrant and modern city in the heart of the UK.



Rich cultural heritage and thriving contemporary arts and music scene.



The **greenest city in the UK** with over 250 parks, woodlands and gardens.



Well-connected city with easily accessible and affordable transport links.



The **most affordable student city in the UK** (NatWest Student Living Index 2021).



Home to more than **564,000 people**.

This is Sheffield

A city full of surprises



Take a **culinary world tour** through Sheffield's contemporary food halls, fine dining restaurants, street food outlets and global cafés.



Watch the latest **blockbuster** or an independent movie at one of Sheffield's cinemas.

Choose from **independent shops and thrift stores or big name brands** at Meadowhall, a large shopping mall with more than 290 stores.



Take in some **culture** with an exhibition at the Millennium Gallery or watch a play at the Crucible Theatre.



Listen to bands at **one of the city's live music venues** or make memories at Tramlines, Sheffield's own annual music festival.



Relax in one of the **city's parks** or explore the nearby **Peak District National Park** – a stunning landscape home to picturesque villages, market towns and traditional English manor houses.

Sheffield has very quickly become home for me. The people here are so friendly and always willing to go out of their way to help you.

With students making up a quarter of Sheffield's population, it is very much a student city. As a result, there are so many activities catered to young adults ranging from music festivals and events to nights out. And of course, we can't forget all the student discounts.

The city is very international with a variety of international supermarkets and restaurants serving food from all parts of the world – so you are never short of a new cuisine to try.

The Peak District is literally right at your doorstep. It is the perfect escape from the city and a great place to visit to exercise and destress.

Aleena Madathiparambil Saju
Singapore
MBChB Medicine



Food for thought



Living in Sheffield will give you the chance to try traditional English dishes, but a taste of home is never far away with Caribbean, Chinese, Indian, Italian, Lebanese, Japanese and Thai restaurants and many more within a few minutes of campus.

For a taste of home:

- The Chakra Lounge.
- The Greedy Greek.
- Lucky Fox.
- Năm Sông.
- Napoli Centro.
- Oiso.
- Piña.

Food halls Cutlery Works and Kommune have a variety of eateries all in one place, and monthly food market Peddler has an ever changing array of mouthwatering food vendors.

There are also a number of specialist international supermarkets which stock products from around the world, and the University's Students' Union Shop also sells a selection of global foods.

Stock up on the essentials:

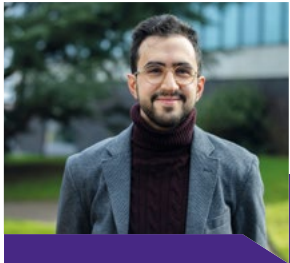
- KH Oriental.
- The Moor Market.
- Ozmen.
- Students' Union Shop.

There are plenty of supermarket chains in Sheffield with Aldi, Co-op, Tesco, Morrisons and Sainsbury's all with locations in and around campus.

A place where everyone belongs

Sheffield is a truly welcoming and friendly city and it's a place where everyone belongs. People from all different nationalities, faiths and cultures have made Sheffield their home thanks to our multicultural and inclusive community.

In 2007 the city was named the first official City of Sanctuary which means people of all backgrounds are welcomed here. The University of Sheffield recently announced over £1 million of funding to support students, scholars and other staff who are seeking sanctuary in the UK or affected by war in their home countries.



I was afraid that I would struggle with fitting in and getting familiar with the University and the city. However, I found Sheffield to be such a wholesome city to the extent that it already feels like a second home.

Abdullah Tajeddin
Syria
MSc Clinical Neurology



As an international student, coming to University in the UK will most likely be the first time you are away from your home country. It can seem like you have been uprooted from your familiar surroundings, but you don't need to worry as Sheffield is so welcoming and has a sense of community that is hard to get elsewhere.

Omosefe Osakue
Nigeria
MComp Computer Science

The University's Chaplaincy Centre offers care and support to people of all faiths and none, and provides opportunities for worship, prayer and spiritual exploration. Wherever you are on the journey of faith and whatever your religious commitment, across the city you'll find places of worship to practise your beliefs and opportunities to connect with others who share them.

Your future starts here



The tutors are very active and passionate in their respective fields and they've been a big source of motivation to strive through the rigorous experience of completing a masters. My personal tutor has been supportive from the very beginning in helping me adjust to a new education system here in the UK and adapt to the new environment.

Juliana Shrestha
Nepal
MA Intercultural Communication
and International Development

Studying in the UK is an investment in your future and will help increase your earning potential and future opportunities. As a world top 100 University, a degree from Sheffield will be recognised and valued by employers from all over the world.

Whatever subject you choose to study, at Sheffield you'll receive high-quality education and support, as well as having an amazing student experience. Our academics use innovative methods to give you the best learning experience, inside and outside the classroom. In addition to becoming a specialist in your chosen subject, you'll develop problem solving, research, analytical, team working and leadership skills and increase your confidence.

We work with businesses and organisations to ensure our course content is up to date and relevant, and to ensure that the skills and experience you will gain meet the needs of future employers. Some courses are also accredited by leading professional bodies and associations. Many undergraduate courses offer the opportunity to undertake a placement year or spend time abroad.

Throughout the past few years, our community has demonstrated its commitment and ability to come together to overcome the challenges of the COVID-19 pandemic. The health and wellbeing of our student and staff community will always be our top priority and we're committed to providing a high quality education, comprehensive support and outstanding student experience no matter what the future may bring.



At the start of the pandemic I remember feeling quite scared and unsure of what would happen with my education. Thankfully, the University adapted very quickly to online teaching and support as many virtual resources and activities were already available. Face to face teaching has now resumed, but I know that if we were in a situation where it needed to move online again, the University has the expertise and technology to do so.

Andreea Huidan
Romania
BA Politics and Philosophy

The power of research



The University of Sheffield is a member of the Russell Group, a group of 24 leading UK universities known for being world-class, research-focused institutions. As a member of the Russell Group, we champion the importance of research and believe that people and ideas are key to solving global challenges.

We work on joint research projects with major multinational businesses, international organisations, global charities and governments. This gives us unparalleled access into the current issues facing organisations, industries, economies and societies as a whole.

92 per cent of our research is rated world-leading or internationally excellent (Research Excellence Framework 2021).

Studying at a university with a strong research focus means that you will be learning from experts in their field – the ones publishing papers in journals and writing the text books. You'll benefit from their vast experience and unique insights, as well as being taught the very latest thinking in your subject area.

We are working on over 80 research projects that span the breadth of the United Nations Sustainable Development Goals, supporting a vision for dignity, peace and prosperity for people and the planet, now and in the future.



I worked on a research project with academics as part of the Sheffield Undergraduate Research Experience scheme. The project I worked on explored whether exposure to transgender characters in fiction reduced prejudice to the transgender community. It was a great opportunity to enhance and develop my research skills, explore new ideas and work with leading researchers.

Qutouf Ahmed Mohammed Al Kindi
Oman
BSc Psychology

Our four flagship institutes bring together internationally recognised experts from across different academic disciplines who share a vision to make change happen:

- Energy Institute.
- Neuroscience Institute.
- Healthy Lifespan Institute.
- Institute for Sustainable Food.

Established in 2001 as part of a collaboration with Boeing, the University's Advanced Manufacturing Research Centre (AMRC) now has over 120 partners and is seen as a model for collaborative research between universities and industry.

Supporting you



We've been welcoming international students to our University for more than 100 years and provide a range of support services to help you succeed in your studies and settle into university life here in Sheffield.

Dedicated visa support

We can help guide you through the visa application process before you arrive, as well as support you with any immigration issues during your stay and assist you if you want to apply for the UK's Graduate visa once you have completed your course.

sheffield.ac.uk/new-students/immigration

Welcome events and ongoing activities

We run a welcome and orientation programme to help you settle into life in the UK and familiarise yourself with our city. We also organise regular events and activities throughout the academic year and during the vacation periods.

Health and wellbeing

Our University Health Service has a dedicated team of doctors and nurses offering primary care and other medical services. There is also mental health support, counselling services, and disability and dyslexia support.

Academic skills support


Studying in the UK can be different from what you have experienced in your home country. We offer workshops, one-to-one tutorials and online resources to help you achieve your best. Topics include:

- Academic writing.
- Revision techniques.
- Mathematics and statistics.
- Communication skills.

You can also get support with your English language.

Jobs and work experience

We can help you look for jobs and work experience, including part-time paid work, summer internships and voluntary work. If you're interested in doing a placement year during your studies, our Careers Service is here to help. Read more on page 35.

A portrait of a young woman with long, dark, wavy hair, smiling. She is wearing a teal-colored top and a necklace with a small pendant. The background is a blurred outdoor setting with a building.

I was so overwhelmed with joy when I found out I had been awarded the scholarship. The scholarship has been an incredible help to my family and I am beyond grateful to be studying my course at a University so highly ranked in Engineering.

In the future I plan on working towards being professionally qualified as a Chartered Engineer. I am passionate about global environmental issues related to sustainability in buildings, depletion of energy resources and promotion of green design in architecture.

Aanchal Bhagwat
India

MEng Architectural Engineering with a Year in Industry

Scholarships to help you excel

Our International Merit Scholarship Scheme for 2022 entry included 75 x 50% tuition fee discount for undergraduate students for each year of study and 125 x 25% tuition fee discount for postgraduate taught students.

Details of available scholarships for 2023 entry and full terms and conditions are available on our website.

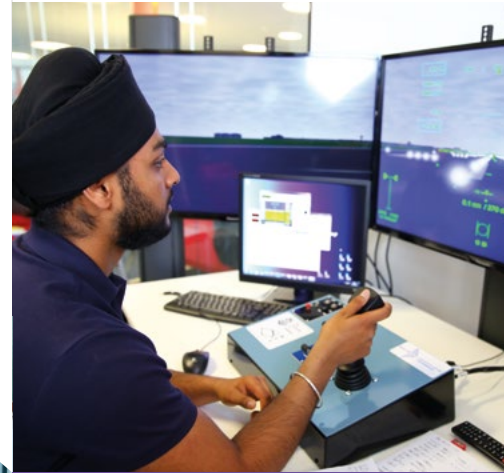
Outstanding facilities



We continually invest in our facilities to create the best learning environment for you.

Many of our learning and teaching spaces are interdisciplinary, and there are also state-of-the-art laboratories for clinical, engineering and science subjects with specialist, industry-standard equipment, as well as music technology spaces, broadcast studios, multimedia newsrooms and a fully-equipped financial trading room.

Our two main libraries are Western Bank and the Information Commons, though there is a wide range of study spaces across the University. Our online library has almost a million ebooks and over 60,000 journal titles, with fast, free, secure Wi-Fi available across campus.



The Aerospace Simulation and Propulsion Laboratory provides hands-on experience of aircraft design and performance using state-of-the-art flight simulators.

Fully-equipped financial trading room built around Bloomberg and Refinitiv Eikon.



Our virtual reality clinical dental suite gives students the chance to develop skills in operative dentistry.



Explore our campus

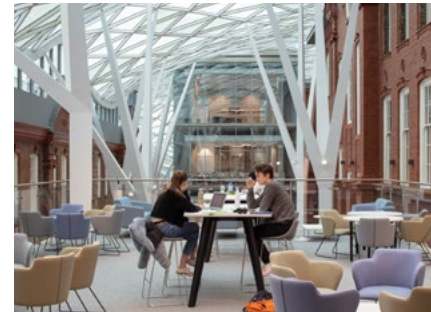


The University campus is located within walking distance of our student accommodation and city centre. Most students choose to walk to and from the University, but there is plenty of public transport available.



The gym at Sport Sheffield.

Our award-winning Students' Union.



Old meets new in the Engineering Heartspace.



The Arts Tower, the tallest academic building in the UK.



Firth Court, our iconic red brick building.



State-of-the-art laboratories in the Diamond.



Information Commons, open 24/7.



Life on campus

The Students' Union is run by and for students to make sure you have an amazing experience during your time at Sheffield.

Thanks to a wide range of different societies, sports, volunteering, events and activities plus outstanding support services, it's been voted the best Students' Union in the UK (Whatuni Student Choice Awards 2022).

The Students' Union has its own cinema and live music venue with regular club nights, as well as a variety of places to eat and drink, many offering international, vegan, vegetarian, gluten-free and halal food. Our Students' Union is also committed to sustainability, with a zero waste shop selling food products that are free from plastic packaging and the Swap Shop helping you refresh your wardrobe in a sustainable way.



Sheffield's Students' Union definitely played a role in my decision to come here and I couldn't be happier. The SU has made me feel welcome and given me support in every way possible, helping me to feel part of Sheffield and enjoy student life to the fullest.

Ariana Hernandez Alvarez
Cuba
MSc Dental Materials Science



I joined PhotoSoc because I wanted to learn how to use my camera from others just like me. It has been one of the best decisions I have made. I've met some of my closest friends and we have travelled all over the UK. I cannot recommend enough to join a society that you are passionate about.

Malik Fernando
Sri Lanka
BEng Mechanical Engineering

Get involved

Volunteering gives you the chance to give something back to the community and make a difference to those who need it most. There are local causes and international projects for you to get involved with.

Societies are student-led clubs of like-minded people, and at Sheffield there are more than 330 to choose from. There are societies based around different hobbies and interests, as well as different national and faith societies.

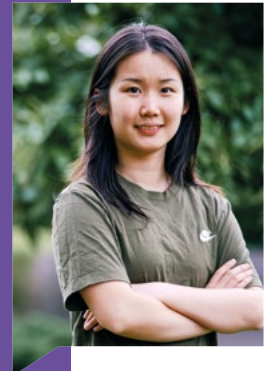
su.sheffield.ac.uk/activities

Whether you've played a sport competitively, want to play for fun or just fancy keeping fit, there are a range of options at Sheffield. There's a fitness centre on campus with a state-of-the-art gym, pool, squash courts, group classes and a climbing wall, plus outdoor pitches for everything from American football to hockey.

sheffield.ac.uk/sport

Volunteering at the Botanical Gardens in Sheffield gave me the opportunity to get my hands dirty and put into practice some of my learning from my course. The staff and other volunteers at the Botanical Gardens were really friendly and made me feel very welcomed and appreciated.

Ran Tao
China
BA Landscape Architecture



Make yourself at home

I love living in University accommodation! My accommodation is close to the Diamond, making it really convenient for attending labs and lectures. Living in University accommodation also means I have access to Residence Life membership which includes social events and activities. As an international student these events have allowed me to meet new people and enjoy myself, especially during the Christmas and Easter vacation periods when you can feel more homesick.

Chalisa Pusitdhikul
Thailand
MEng Chemical Engineering with a Year in Industry

Living in University accommodation is a great way to make friends and try new things. You'll benefit from our award-winning Residence Life programme of free and discounted events and activities.

- Wi-Fi and utilities included.
- Majority en-suite.
- Private bedrooms.
- Shared kitchen/social spaces.
- Guaranteed room for majority of students.
- Locations next to campus and just a short walk away.
- Flexible contracts.
- Average rent of £153.97 per week*.

Sheffield also has a wide range of good-quality private accommodation to suit different lifestyles and budgets, and the University can help support you to find somewhere suitable.

*Average rent in 2021/22 for an en-suite bedroom at Allen Court and Ranmoor/Endcliffe locations.





I've attended a number of workshops to help improve my CV writing and interview technique, and I've also gained a more comprehensive understanding of the career path I should follow in order for me to achieve the goals I've set in my professional life.

Olegario Chavez Guzman
Mexico
MSc Logistics and Supply Chain Management

Your future career

Our Careers Service provides support and advice for as long as you need it.

We can help you explore what's next in terms of your career whether you are seeking employment, want to set up your own business or want to undertake further study. We have connections with big private sector employers, small and medium sized enterprises, and third sector organisations in the UK and abroad.

We offer:

- On campus and virtual employer fairs.
- Workshops on writing CVs, preparing for interviews and succeeding at assessment centres.
- Help for undergraduate students wanting to pursue a placement year.
- Tailored advice on opportunities with your subject.
- Support whether you're searching for a job in the UK or overseas.

The UK's Graduate visa provides an opportunity to stay in the UK and work, or look for work, at any skill level for two years (three years for doctoral students). Our visa team can help you with the application process.



My placement year at Roche has enabled me to gain insights into how the industry works and also enabled me to build important interpersonal relationships, technical skills, knowledge and soft skills that will act as a stepping stone to the next level in my career after I graduate.

Siddharth Vasudev
Kenya
BEng Bioengineering with a Year in Industry

Achieve your ambitions

Whether you choose to stay in the UK after graduating or seek opportunities in other countries, you'll join our global network of over 300,000 alumni from more than 200 countries.



From the moment I heard about Sheffield at a university fair in Riyadh, I knew it was the right choice for me. I loved the specialist facilities at the Diamond – they felt very futuristic and cutting edge. Thanks to the support and advice of the Careers Service I landed a dream job at Jaguar Land Rover when I finished my degree, and more recently I've moved to Bentley Motors where I work as Technical Manager. Staying in the UK was always an ambition of mine, and I'm glad I've stayed in the north of England too – the people here are so friendly.

Saqib Moosa
Saudi Arabia
BEng Electrical Engineering, class of 2016



My course helped me build up a very strong foundation in my subject area and this has been a great advantage as I start my career in Auditing at BDO, especially the exemptions I received from some of the professional exams.

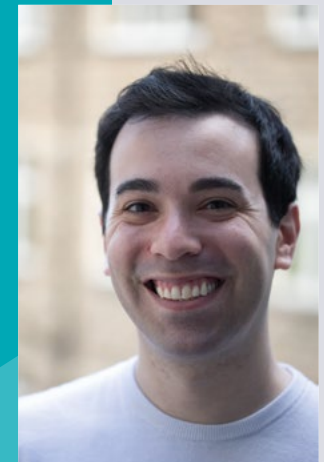
I always talk about how my experience at university was probably the best three years of my life so far – my course, all the activities I got involved in and the support network at the University played such an important role in equipping me with all the necessary skills and qualities to secure my first job in the UK.

May Than Thar Cho
Myanmar
BA Accounting and Financial Management,
class of 2021

My course at Sheffield helped me to understand the mechanics of how government works, not just in the UK, but throughout the world. I gained an incredibly valuable insight into working in the field of public policy and currently work as a Chief of Staff for the New York State Assembly. I've been able to work on some remarkable initiatives, help pass legislation and implement new policies that work for the people.

I can truly say my time at Sheffield helped mould me and gave me a strong foundation and understanding on how to be a success in my field. My time at Sheffield was invaluable and I really miss it. I've been reminiscing recently as part of the University's Ask a Graduate scheme which connects offer holders with alumni to share their experiences so hopefully I've been able to inspire future Sheffield students!

Greg Slade
USA
MA Politics, Governance and Public Policy, class of 2019



Our courses

We offer undergraduate, postgraduate taught and postgraduate research courses in a wide range of subject areas, including:

Aerospace Engineering	Landscape Architecture
Animal and Plant Sciences	Languages and Cultures
Archaeology	Law
Automatic Control and Systems Engineering	Management
Biblical Studies	Materials Science and Engineering
Biomedical Science	Mathematics and Statistics
Chemical and Biological Engineering	Mechanical Engineering
Chemistry	Medicine
Civil and Structural Engineering	Molecular Biology and Biotechnology
Dentistry	Music
Economics	Neuroscience
Education	Nursing and Midwifery
Electronic and Electrical Engineering	Oncology and Metabolism
French Studies	Ophthalmology and Orthoptics
Geography	Philosophy
Germanic Studies	Physics and Astronomy
Health and Related Research	Politics
Health Sciences	Psychology
Spanish and Latin American Studies	Religion, Theology and the Bible
History	Russian and Slavonic Studies
Human Communication Sciences	Sociological Studies
Infection, Immunity and Cardiovascular Disease	Speech and Language
Information Management	Urban Studies and Planning
Journalism Studies	

You can find more detailed information on our courses online.

Applying for an undergraduate course



Submit your application through the Universities and Colleges Admissions Service (UCAS) and upload your documents and personal statement. We'll review your application and let you know our decision via UCAS.

Deadlines for 2023 entry: Applications to medicine and dentistry courses must be submitted by 15 October 2022. All other courses have an equal consideration deadline of 25 January 2023, however applications can be submitted until 30 June 2023. We recommend that you apply as soon as possible as many courses are very popular.

Applying for a postgraduate taught course



Submit your application through our online application system and upload your documents. We'll review your application and let you know our decision via email.

Deadlines for 2023 entry: A number of our most popular courses have application deadlines and these are available on our website. We recommend that you apply as soon as possible as many courses are very popular. You do not need to wait for your final examination results or references to submit your application.

Applying for a postgraduate research course



There are three ways you can undertake postgraduate research at the University:

- Research your own idea with an academic supervisor.
- Apply to work with a supervisor on one of their projects.
- Within one of our Centres for Doctoral Training.

Applying for a postgraduate research course requires additional research and time. There is advice on our website including guidance on the three different routes. When you are ready to apply, you can submit an application via our website.

Entry requirements vary by subject – some require a masters degree, others ask for a good undergraduate degree (eg a 2:1 or a First). The English language requirements also vary by subject.



I budget my expenses at the start of every month and take advantage of the many local and national student discounts available. Sheffield itself is very affordable for an international student like myself. One of my favourite activities is watching the sunsets over the city – it's free and beautiful!

Zarmeen Fatima
Pakistan
MSc Human Resource Management

Fees and funding

Tuition fees

Tuition fees for international students for the majority of courses starting in 2023 are between £21,000 and £29,950.

sheffield.ac.uk/new-students/tuition-fees

Living costs

Sheffield offers a lower cost of living compared to other major UK cities, so your money will go further here. The exact amount you will need to spend on accommodation, food and other household expenses, as well as socialising and entertainment costs will depend on your own personal circumstances.

If you need a Student visa to study in the UK, you'll normally need to show you have enough money to support yourself during your studies.

sheffield.ac.uk/new-students/immigration

Scholarships

Our International Merit Scholarship Scheme for 2022 entry included 75 x 50% tuition fee discount for undergraduate students for each year of study and 125 x 25% tuition fee discount for postgraduate taught students. Details of available scholarships for 2023 entry and full terms and conditions are available on our website.

sheffield.ac.uk/international/scholarships



The International Undergraduate Merit Scholarship gave me a 50% reduction in my tuition fee which has helped relieve some of the financial burdens of studying at university and made the process of moving to the UK that much easier. I remember counting the days to the decision date and anticipating the outcome.

It feels good to be recognised for your achievements, especially when it allows you to pursue your dreams and ambitions. I hope that I can use the knowledge I obtain at the University of Sheffield to be part of a global project that helps the world meet its target of being a carbon-neutral society by 2050 by helping implement and promote clean energy.

Mateja Smitran
Serbia
BSc Physics

English language requirements

If English is not your first language, you will need a recognised English language qualification to study at the University.

We accept a range of qualifications including IELTS Academic:

- sheffield.ac.uk/undergraduate/apply/english-language
- sheffield.ac.uk/postgraduate/english-language

Support to improve your English

Many students choose to study a course at the University's English Language Teaching Centre (ELTC) to meet the English language requirements for their course. The ELTC is accredited by the British Council and is a Cambridge Assessment English exam centre.

Successfully attending and completing the assessments on a pre-sessional English course at the ELTC will allow you to progress directly onto your academic course at the University without having to take another English language exam. The length of study required will depend on your current level of English and the English language requirement of your degree.

We offer free English language support during your course to help your academic literacy and communication skills. If your partner has accompanied you to the UK, we can offer them free part-time English classes too.



Foundation year and pre-masters courses

If you are not eligible for direct entry onto an undergraduate or postgraduate course, the University of Sheffield International College offers pathway programmes to university study.

Over 1,000 international students from more than 50 countries study at the college each year. The college provides a supportive learning environment designed to meet the needs of international students.

Both the International Foundation Year and Pre-Masters Programme operate as either one-and-a-half or two-semester programmes, with September, January and March start dates. You can apply online or via an international recruitment agent.

Subject routes

- Business, Social Sciences and Humanities.
- Science and Engineering.

During your course, the college will help you to:

- Reach the academic level you need in your chosen subject.
- Learn the study skills and independent learning techniques which you'll need for your course at Sheffield.
- Develop your English language skills and confidence so you can take part in lectures and tutorials and get the most out of your studies.

We're here to help



We know that there's a lot to consider when choosing where to study.

We are here to help with any questions you might have about joining the University of Sheffield and would love to hear from you.

Keep in touch

The best way to contact us is via email:
international@sheffield.ac.uk

If you apply and are made an offer to study with us, we'll keep in touch with you regularly via email to let you know about any upcoming scholarship opportunities, events or information that we think may be of interest to you. Remember to check your email frequently and pay attention to any documents or deadlines.

Chat online

You can chat online to current students and hear about their experience of studying and living in Sheffield.

sheffield.ac.uk/study/chat

Meet us online or in person

If you are visiting the UK and would like to visit the University of Sheffield please get in touch. We have expert staff based in China, India, Malaysia and Nigeria, and we regularly travel overseas to take part in fairs and exhibitions, as well as hosting and taking part in online events.

sheffield.ac.uk/international/visits

Global representatives

We have a worldwide network of international recruitment agents who can offer you advice and support. They are trained counsellors with experience of our entry requirements and application procedures.

sheffield.ac.uk/international/representatives

Map of the UK

3 HOURS 30 MINUTES BY TRAIN
FROM EDINBURGH

40 MINUTES BY TRAIN
FROM LEEDS

50 MINUTES BY TRAIN
FROM MANCHESTER

1 HOUR 10 MINUTES BY TRAIN
FROM MANCHESTER AIRPORT

SHEFFIELD

1 HOUR 10 MINUTES BY TRAIN
FROM BIRMINGHAM

2 HOURS BY TRAIN
FROM LONDON



University of Sheffield

The University of Sheffield
Western Bank
Sheffield
S10 2TN

While every effort has been made to ensure the accuracy of the information in this publication, changes may need to be made to courses, entry requirements and fees between the date of this publication and the start of your course. This publication is correct as at the time of print, but please see sheffield.ac.uk for the most up to date information about studying at the University. If there is any inconsistency between this publication and sheffield.ac.uk, the information on sheffield.ac.uk should be taken as correct.

