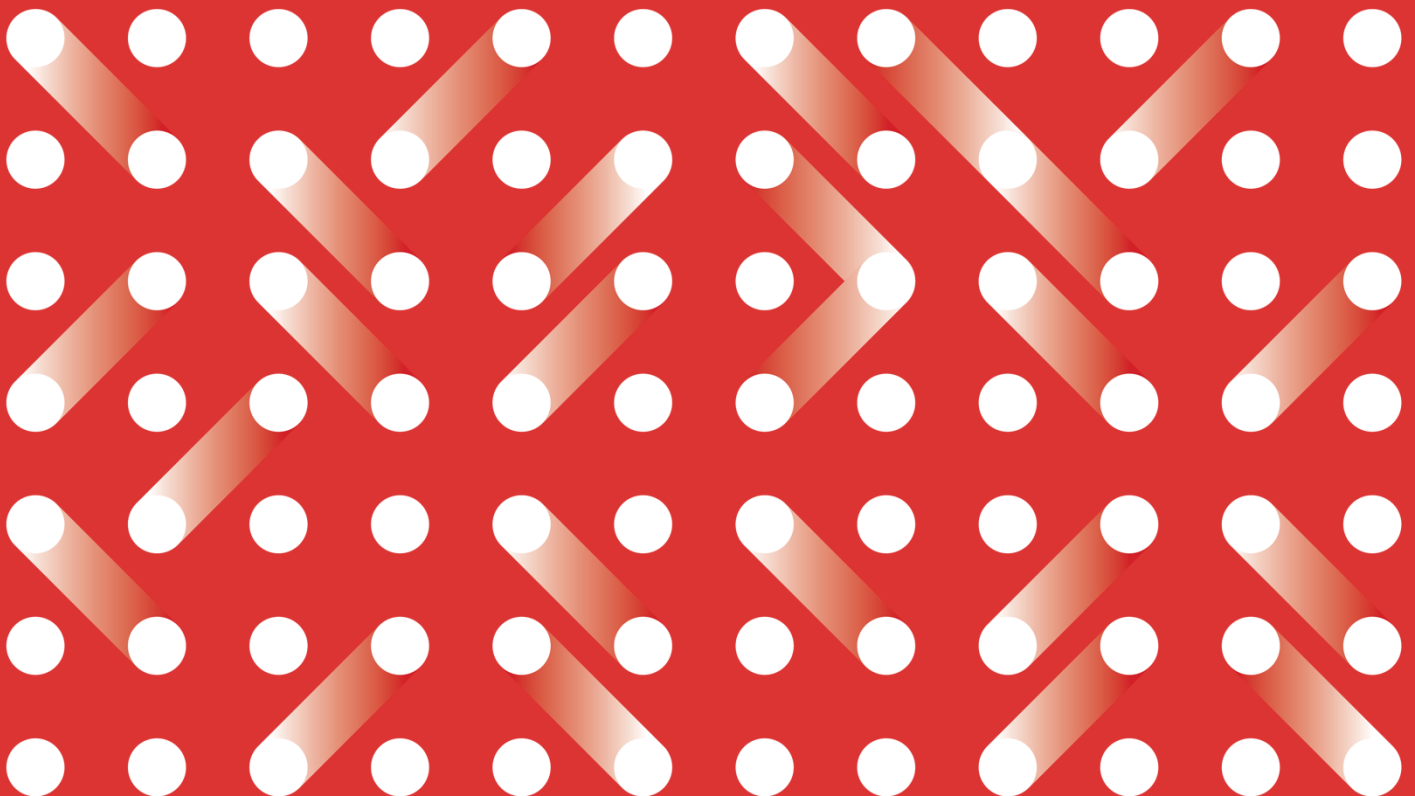


Student Protection Plan



Student Protection Plan

Contents

1 INTRODUCTION.....	2
2 The process for the communication with the students and study centres	6
3 Who to contact	7
4 Appendix: Glossary.....	8

VERSION

<i>Release Date</i>	<i>Version No.</i>	<i>Summary of Main Changes</i>	<i>Owner</i>
<i>October 2025</i>	<i>V1.0</i>	Introduction of Student Protection Plan	<i>Quality Assurance</i>

1 INTRODUCTION

This Student Protection Plan outlines the measures in place to protect the interests of our students in the unlikely event of unexpected changes to programmes, study centres, or institutional operations. The purpose of this plan is to ensure that students can continue and complete their studies without or with minimal disruption.

What does Student Protection Plan cover?

The Student Protection Plan is available for all current and future potential NCUK students that are studying across all NCUK programmes:

1. International Foundation Year (IFY)
2. Art and Design Foundation
3. International Year One (IYOne)
4. International Year Two (IYTwo)
5. Master's Preparation (MP)

Specific Risks to Continuation of Study

At NCUK, we have established strong processes and frameworks to ensure the continuity and stability of our programmes, delivery locations, and overall operations. Based on our risk assessments, the probability of significant changes, such as programme closures, changes to delivery locations, or organisational disruptions, is very low. NCUK operates within a solid governance framework and works closely with partners to regularly review offerings, ensuring they meet the needs of students and stakeholders. While we are confident in our ability to maintain uninterrupted delivery of our programmes, this Student Protection Plan is in place to safeguard the interests of students in the unlikely event of unforeseen changes.

We have conducted an assessment of the risk to the continuation of study for our students and have identified the following unlikely scenarios:

1. Programme/Module Closure/withdrawal. A specific programme/module may be discontinued due to declining enrolment or strategic realignment.
2. Study Centre closure. Closure of the study centre due to operational, financial or strategic reasons.
3. Study Centre facilities emergency. Due to facilities emergency, study centre is not fit for purpose to deliver NCUK programmes.
4. Institutional Closure. Complete Institutional Closure due to various or unforeseen circumstances.

5. Withdrawal from specific markets due to regulatory/policy changes. Closure of the programmes within the specific region due to external factors such as regulatory or local policy changes.
6. Other unforeseen geopolitical events.

Mitigation measures to protect the interest of students

We are committed to ensuring that all students can complete their NCUK programmes as planned, even in the event of unforeseen circumstances. The principles outlined below provide a framework for protecting students' interests could include, but are not limited to:

Programme Withdrawal at NCUK level	<p>NCUK follows the programme withdrawal principles set out in the NCUK Programme Lifecycle Framework. Please refer to this document for further details. The key principles in protecting students are:</p> <ul style="list-style-type: none"> • Provide affected students with a reasonable notice allowing enrolled students to complete their studies as planned. • Clearly communicate last registration and certification dates for the affected programme.. <p>Collaborate closely with affected study centres to ensure timely and transparent communication with students. Notify external stakeholders, where appropriate. Where immediate programme withdrawal is unavoidable, support students in transferring to similar programmes at other institutions for example by providing recommendation letters .</p>
Module Withdrawal at NCUK level	<ul style="list-style-type: none"> • Work closely with affected study centres to ensure timely and transparent communication with students. Provide affected students with reasonable notice to allow them to complete the module as planned. Clearly communicate last registration and certification dates for the affected module. Offer an alternative module as a substitute, where possible.
Study Centre Withdrawal	<p>NCUK has a separate Study Centre Withdrawal Policy that outlines the main principles of voluntary or involuntary study centre withdrawal. Please refer to this policy for further details. The main principles in protecting the interest of students are:</p> <ul style="list-style-type: none"> • Work closely with the affected study centre to provide timely and clear communication to affected students

	<ul style="list-style-type: none"> • Allow students to complete their programme of study, if possible <p>If feasible, relocate teaching and learning to another study centre nearby. Provide support for travel costs or relocation assistance, where applicable, with costs covered by the affected study centre.</p>
Study Centre Facilities emergency	<p>NCUK operates a Crisis Contingency Learning and Teaching Framework, which outlines the response to various crisis situations. Please refer to this document for further details. The key principles in protecting students are:</p> <ul style="list-style-type: none"> • Consult NCUK Crisis Contingency Learning and Teaching Framework • Work closely with the affected study centres to provide timely and clear communication to affected students • Relocate teaching and learning to another study centre nearby, if necessary. <p>Collaborate with the study centre to ensure that facilities are restored and fit for purpose as soon as possible.</p>
Institutional (NCUK) Closure	<ul style="list-style-type: none"> • Work closely with the affected study centres to provide timely and clear communication to affected students and other stakeholders • Allow currently enrolled students to complete their studies as planned. • Assist students in transferring to similar programmes at other institutions, if necessary.
NCUK University Partner Withdrawing its recognition	<ul style="list-style-type: none"> • Termination of a university agreement does not automatically affect students' admissibility, but it may limit NCUK's ability to support or represent them in relation to that institution. • NCUK will provide timely, clear and accessible communication to all affected students, study centres, and stakeholders within 10 days of confirmation of the withdrawal if timeline affects existing students • Students will receive written guidance outlining their options, next steps and support channels, with dedicated points of contact for queries. • NCUK will work proactively with its wider university network to identify equivalent or comparable progression routes, ensuring students are not

	<p>disadvantaged in terms of subject choice, entry requirements or graduation timelines.</p> <ul style="list-style-type: none"> • Where possible, NCUK will seek to honour existing offers or negotiate with alternative universities to provide students with guaranteed progression opportunities • In all cases all efforts will be made that any withdrawal will come into effect for future intakes, to protect the interest of existing student intakes
Withdrawal from specific markets due to regulatory/policy changes	<ul style="list-style-type: none"> • Work closely with the affected study centres to provide timely and clear communication to affected students. • Consult NCUK Crisis Contingency Learning and Teaching Framework • Assist students in transferring to similar programmes at other institutions, if necessary, if crisis plan cannot be implemented. • If imposed changes have enough notice have a clear exit market strategy in place that would allow existing student to complete their studies
Other unforeseen geopolitical events.	<ul style="list-style-type: none"> • Work closely with the affected study centre to provide timely and clear communication to affected students. • Consult NCUK Crisis Contingency Learning and Teaching Framework for alternative delivery options.

2 The process for the communication with the students and study centres

1. Communication and Transparency

NCUK will communicate openly and transparently in the event that the Student Protection Plan is triggered. NCUK is committed to working closely with affected study centres to ensure that students' interests are protected and prioritised.

All communications will comply with UK GDPR and relevant local data protection laws. Student data will only be shared with third parties where necessary to implement this plan and with appropriate safeguards in place.

2. Notification Process

If the NCUK Student Protection Plan is triggered, and the change directly impacts students, a dedicated NCUK representative from the Programme Delivery Team will formally notify the affected study centre within ten full working days of the plan being activated. The Quality team will draft letters/comms and PDM will share it.

3. Student Support and Guidance

Upon notification, the affected study centre will receive information outlining:

- The designated contact point for student inquiries, particularly for those with specialist needs.
- The advice and support services available to affected students.

4. Study Centre-Led Communication

If the affected study centre remains operational and is able to communicate with students, NCUK will closely monitor all communication to ensure it aligns with the Student Protection Plan and associated NCUK policies.

5. Direct NCUK Communication in Exceptional Circumstances

If a study centre is deemed unfit to communicate effectively with affected students, NCUK will assume direct responsibility for student communication. In such cases, students will be contacted directly via the approved NCUK email channel: audit@ncuk.ac.uk

6. NCUK operates in accordance with applicable UK law and binding regulatory expectations

All Plan actions will comply with UK GDPR and relevant international/local data protection legislation, contractual obligations with study centres, and regulatory requirements.

7. NCUK's obligations under this Plan are limited to reasonable endeavours.

NCUK will not be liable for losses arising from events beyond its reasonable control, including but not limited to force majeure, the actions or omissions of a study centre or third parties, or regulatory actions.

8. A Force Majeure clause will be applied where appropriate.

Defined events include natural disasters, pandemics, war, terrorism, strikes, government actions, and similar unforeseeable events. Where Force Majeure is declared, NCUK will activate the Crisis Contingency Learning & Teaching Framework and apply the teach-out and communication procedures set out in this plan

3 Who to contact

If you have immediate views, concerns, or feedback in relation to Student Protection Plan, you can reach us via:

By email: audit@ncuk.ac.uk

4 Appendix: Glossary

Teach-Out. A process allowing current students to complete their studies which might have been impacted by external factors.

Mitigation Plans. Strategies to minimise disruption to students in the event of unforeseen changes.

Exit Market Strategy. A structured plan to withdraw from a geographical or regulatory market while protecting students

Review Arrangements

This document will be reviewed annually as part of the NCUK self-evaluation arrangements. It may also be revised as and when necessary, in response to feedback, trends from our internal monitoring arrangements, changes in our practices, actions from the regulatory authorities (where applicable) or external agencies or changes in legislation.

Spaces Peter House
Oxford Street
Manchester
M1 5AN
United Kingdom

Tel: 0161 549 9220

www.ncuk.ac.uk

NCUK
UNIVERSITY PATHWAYS